

# NWS008

## ABS+STEEL BEDSIDE TABLE



# NWS008

## FEATURES AND HIGHLIGHTS

### Technical parameters

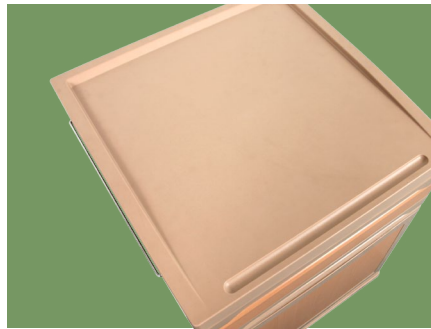
- External size (LxWxH)

500x510x705 mm



#### Design

The bedside table is designed with complete functions, beautiful appearance, not easy to deform, etc., and it is easy to clean and take care of, and it is durable.



#### Material

The cabinet body is made of high-quality steel sprayed plastic. The countertops, drawers, drawers and cabinet doors are all made of ABS, 100% pure new material injection molding, non-toxic and harmless, sturdy, rust and corrosion resistant, easy to clean, and have a long service life.



#### Towel Hook

There are concealed towel hooks on both sides of the cabinet, which can be pulled out when in use and hidden when not in use, saving space, strong, rust-resistant, and easy to clean.



#### Cabinet Body

There is a drawer as a whole, and there is a pull-out dining board between the drawer and the table top; a cabinet with two layers inside and large storage space.



#### Castors

Silent castors, easy to install, strong and stable, easy to transfer, anti-winding.



# NUMBER WIN

MEDICAL TECHNOLOGY

As the circumstance of printing, the photos might have minor difference on color, tactile from real products.  
As the update of design and improvement, parameters and outlook of products might change, thanks for understanding.



## 7x24

Online 24 Hours for Sales Service  
Timely Response for Clients' Problems

+86 18021231901

Suzhou Number Win Medical Technology Co.,Ltd.

No. 35, Lehong Road · Zhangjiagang (Jiangsu) · China

export@number-win.com

www.number-win.com



Company video



General catalogue