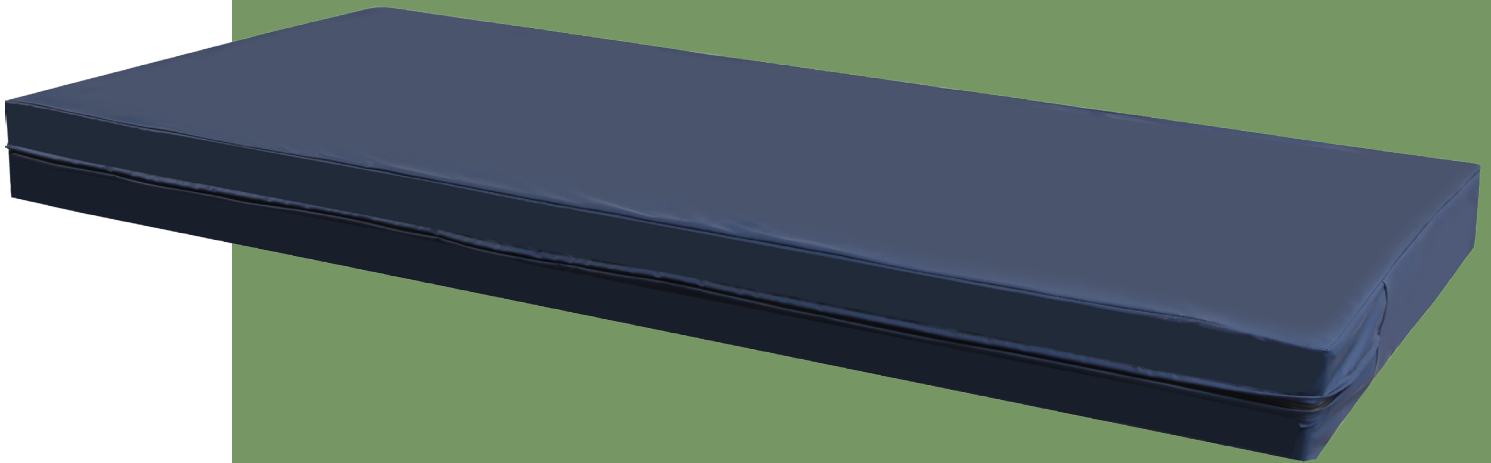


# NWP011

## SECTIONAL MEMORY FOAM MATTRESS



# NWP011

## FEATURES AND HIGHLIGHTS

### Technical parameters

▪ Size (LxWxH)	1925×900×140mm
----------------	----------------

### Upper Layer

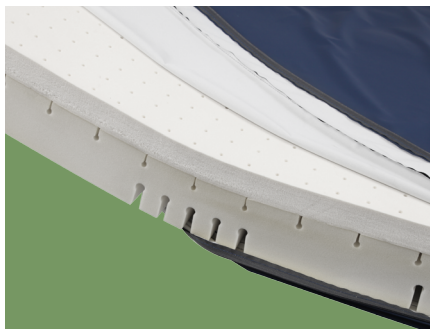
▪ Material	visco-elastic memory foam
▪ Color	blue, green, black
▪ Thickness	40mm
▪ Density	42-45kg/m3

### Zippered Cover

▪ Material	PU
▪ Color	grey or dark blue
▪ Size (LxWxH)	1925×900×140mm

### Firm Base Layer

▪ Material	polyurethane foam
▪ Color	creamy-white
▪ Thickness	100mm
▪ Density	40kg/m3



#### Upper Layer

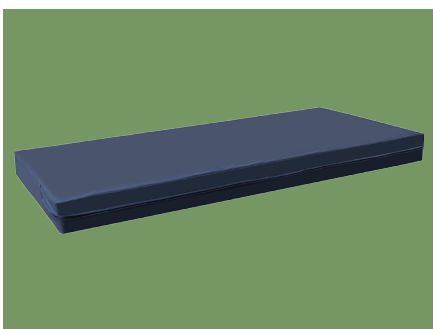
- a) High density: 42-45kg/m3
- b) Unique thermo active properties to provide good support and excellent pressure relief

#### Firm Base Layer

- a) High density: 40kg/m3
- b) Very elastic and thermosetting. Sectional design works to make the mattress and bed surface fit well in different positions such as back-rest and knee-rest adjustment.

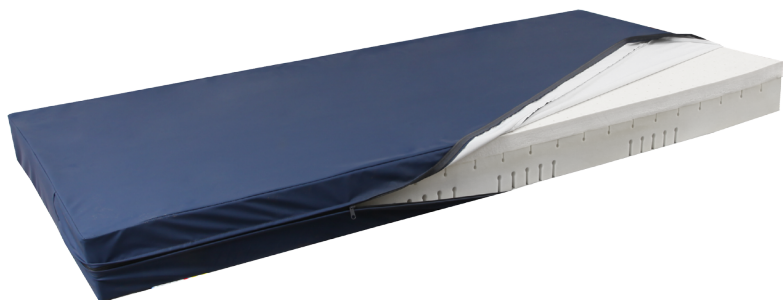
#### Zippered Cover

Air through, water proof, soft, wind-resistant, strong tensile strength and anti-infection. Long zipper design, easy to remove and wash.



#### Size

Customized size acceptable





As the circumstance of printing, the photos might have minor difference on color, tactile from real products.  
As the update of design and improvement, parameters and outlook of products might change, thanks for understanding.

# NUMBER WIN

MEDICAL TECHNOLOGY



## 7×24

Online 24 Hours for Sales Service  
Timely Response for Clients' Problems

+86 18021239272

Suzhou Number Win Medical Technology Co.,Ltd.

No. 35, Lehong Road · Zhangjiagang (Jiangsu) · China

export@number-win.com

www.number-win.com



Company video



General catalogue