

NWGC300

MANUAL ORTHOPEDIC TRACTION BED



NWGC300

FEATURES AND HIGHLIGHTS



Technical parameters

▪ External size (LxWxH)	2270x970x500 mm
▪ Mattress platform	1925x830 mm
▪ Safe working load	250 kg
▪ Back-rest adjustment	0-75° (±10°)
▪ Knee-rest adjustment	0-35° (±10°)
▪ Trendelenburg	0-6°



Technical configuration

<input checked="" type="checkbox"/> Manual cranks	3 pcs
<input checked="" type="checkbox"/> 5" double side castors, central locking	4 pcs
<input checked="" type="checkbox"/> Central locking pedal	2 pcs
<input checked="" type="checkbox"/> Aluminium alloy ABS head and foot board with safe lock	1 set
<input checked="" type="checkbox"/> Aluminium alloy foldable side rail	1 set
<input checked="" type="checkbox"/> IV Pole	1 set
<input checked="" type="checkbox"/> IV Pole Prevision	4 pcs
<input checked="" type="checkbox"/> Drainage Hook	2 pcs
<input checked="" type="checkbox"/> Aluminium balkan frame	1 set



Steels | Painting

Baosteel from Fortune Global 500.
11 Process epoxy painting, ASTM testing anti-bacterial, paint thickness 0.12 mm, brightness 60°, paint can resist 50 kg impact.



Welding | Chassis

Panasonic robotic ensure, 360° full smooth wedding Solid bed base made of 5.0 mm stamped rotating plate.



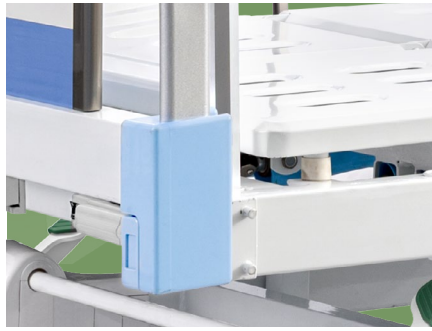
Balkan Frame

Aluminum Balkan Frame, which can adjust the longitudinal, lateral and height positions in all directions, and can accurately adjust the most comfortable posture of the patient.



Hand Control

Retractable hand crank, 100,000 times remaining intact
Extreme protection device, sounds when tipped to the max position, Strong pallets to increase the bed.



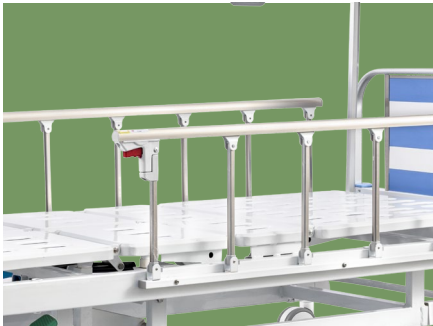
Bumper Cover

Reduce the impact of the collision, safe and slinky, protect the bed and patient during transportation.



Platform

Stamping forming platform, smooth surface no welding scar, bearing 250KG load. Option resin X-ray translucent platform.



Guardrail

Aluminum alloy side rail, 6-staff, collapsed type with safe lock.



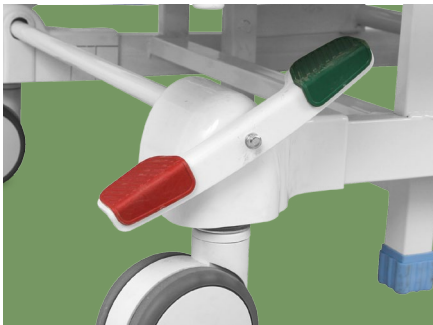
Head & foot board

Aluminium alloy flat tube, MDF material fire-proof plate. size of the head&foot board can be customized.



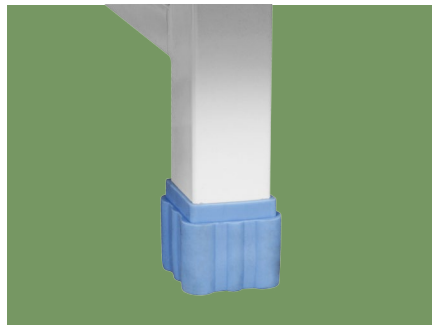
Wheels

Castors with TPR tire, no worn-out after running 30KM, united forming without bolts.
Pass Dynamic test: Bearing 120kg run 30KM and pass obstacles 500time.



Brake

Three position braking system, transporting can maintain a straight line.
ABS cover on castors joint, prevent the dust or hair stuck in. Easy to clean.



Anti-slip bed feet cover

Non-skid, more stable in the ground.



Drainage Hooks

Mobile plastic drainage hooks.



IV pole

Stainless Steel Column with plastic hook.



NUMBER WIN

MEDICAL TECHNOLOGY

As the circumstance of printing, the photos might have minor difference on color, tactile from real products.
As the update of design and improvement, parameters and outlook of products might change, thanks for understanding.



7x24

Online 24 Hours for Sales Service
Timely Response for Clients' Problems

+86 18021231901

Suzhou Number Win Medical Technology Co.,Ltd.

No. 35, Lehong Road · Zhangjiagang (Jiangsu) · China

export@number-win.com

www.number-win.com



Company video



General catalogue