

NWG004

BEDSIDE TABLE



NWG004

FEATURES AND HIGHLIGHTS

Technical parameters

▪ Size (LxWxH)	475x465x745±10mm
▪ Cabinet top size	450x420mm±10mm
▪ Drawer size	395x120mm±10mm
▪ Cabinet size	395x420mm±10mm



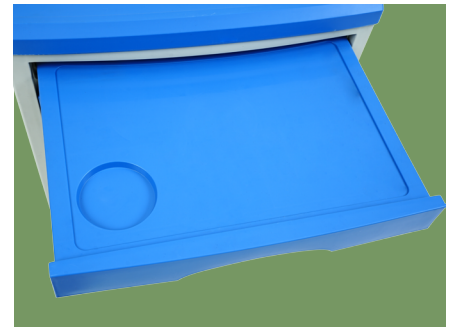
Material

The whole body is 100% pure ABS plastic injection, minimalist, ergonomic design, feature-rich, suitable for different space environments. Beautiful and practical, simplicity, easily integrate various ward environment. Chamfer design around edges and corners, avoid patient bumps, optional casters.



Towel hook

Hidden metal towel hook, sturdy and easy to clean.



Shelf

A shelf, can be used for temporary infusion bags, storage tanks and other items for medical staff, with a cup slot, prevent slipping off.



Countertop

ABS top with Sunken design that avoid stuff falling.



Whole body

Spacious storage countertop, easily store more items; The upper drawer, can store private small items; Lower cabinet door design, more space, can store large items; With a shelf.



NUMBER WIN

MEDICAL TECHNOLOGY



7×24

Online 24 Hours for Sales Service
Timely Response for Clients' Problems

+86 18021239272

Suzhou Number Win Medical Technology Co.,Ltd.

No. 35, Lehong Road · Zhangjiagang (Jiangsu) · China

export@number-win.com

www.number-win.com

As the circumstance of printing, the photos might have minor difference on color, tactile from real products.
As the update of design and improvement, parameters and outlook of products might change, thanks for understanding.



Company video



General catalogue