

# NWE401

## COMMODE CHAIR



# NWE401

## FEATURES AND HIGHLIGHTS

### Technical parameters

▪ Chair height	77cm
▪ Width of sitting surface	42cm
▪ Length of sitting surface	42cm
▪ Leg width	48cm
▪ Leg Length	49cm
▪ Height of the seat from the ground	39cm
▪ Height of the Back-rest	42cm
▪ N.W.	6.5kg
▪ Package size	88×53×60cm



#### Design

Ergonomic and foldable, adapt for sitting and bathing, easy to use.



#### Material

Reinforced carbon steel material, pipe wall thickness 0.8mm, long service life, strong bearing force. Bearing capacity 120kg. Spray for surface, smooth and anti-rust.



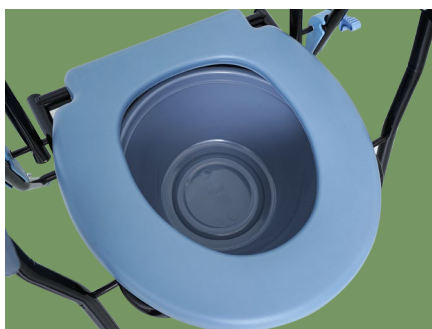
#### Structure

Folding design, which is stable and anti-slip, convenient for storage and save space.



#### Armrest

PP material, anti-slip texture, convenient for getting up.



#### Seat board

PP seat plate, seat plate and toilet can be removed for easy cleaning.



#### Back-rest

PP Back-rest, waterproof and easy to clean, with handle, easy to move.



#### Toilet

Plastic toilet with lid, stable and easy to install and clean.



#### Foot pad

The material is anti-slip and wear-resistant rubber.



#### Buckle

With fixed buckle, providing high safety.





# NUMBER WIN

MEDICAL TECHNOLOGY

As the circumstance of printing, the photos might have minor difference on color, tactile from real products.  
As the update of design and improvement, parameters and outlook of products might change, thanks for understanding.



## 7×24

Online 24 Hours for Sales Service  
Timely Response for Clients' Problems

+86 18021239272

Suzhou Number Win Medical Technology Co.,Ltd.

No. 35, Lehong Road · Zhangjiagang (Jiangsu) · China

export@number-win.com

www.number-win.com



Company video



General catalogue