

NWE202

WALKER



NWE202

FEATURES AND HIGHLIGHTS

Technical parameters

▪ External size (LxWxH)	430x540mm±10mm
▪ Height adjustment	750-930mm±10mm
▪ Folding size	540x750x80mm±10mm



Material

Whole body is made of space aluminum material, simple structure, ergonomic armrest design, suitable for standing posture, comfortable and stable for walking.



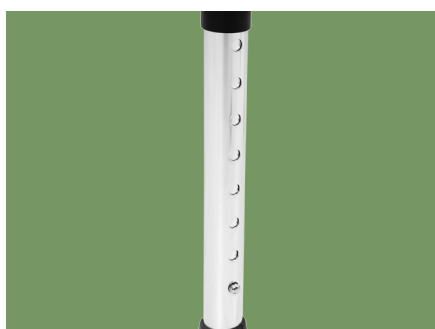
Handrail

PE injection molded anti-slip handrails, anti-slip texture, beautiful and comfortable. Double-layer armrest design, more suitable for elderly people of different heights.



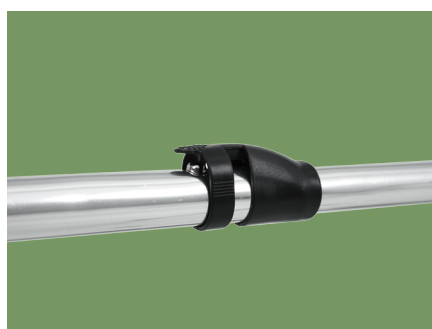
Anti-slip mat design

Rubber material mats, which are anti-slip and wear-resistant, protect the floor and reduce noise.



Height adjustment

8 levels of height adjustment, which ranges from 750 to 930mm. Just need to press the marble and rotate the hose to the appropriate cavity, suitable for different people.



Quick storage design

Quick storage design, just press the marble, and the handrails on both sides can be folded for easy portability.



With walking assistance function

With walking assistance function, press the marble to the walking position to achieve assisted walking.



As the circumstance of printing, the photos might have minor difference on color, tactile from real products.
As the update of design and improvement, parameters and outlook of products might change, thanks for understanding.

NUMBER WIN

MEDICAL TECHNOLOGY



7×24

Online 24 Hours for Sales Service
Timely Response for Clients' Problems

+86 18021239272

Suzhou Number Win Medical Technology Co.,Ltd.

No. 35, Lehong Road · Zhangjiagang (Jiangsu) · China

export@number-win.com

www.number-win.com



Company video



General catalogue