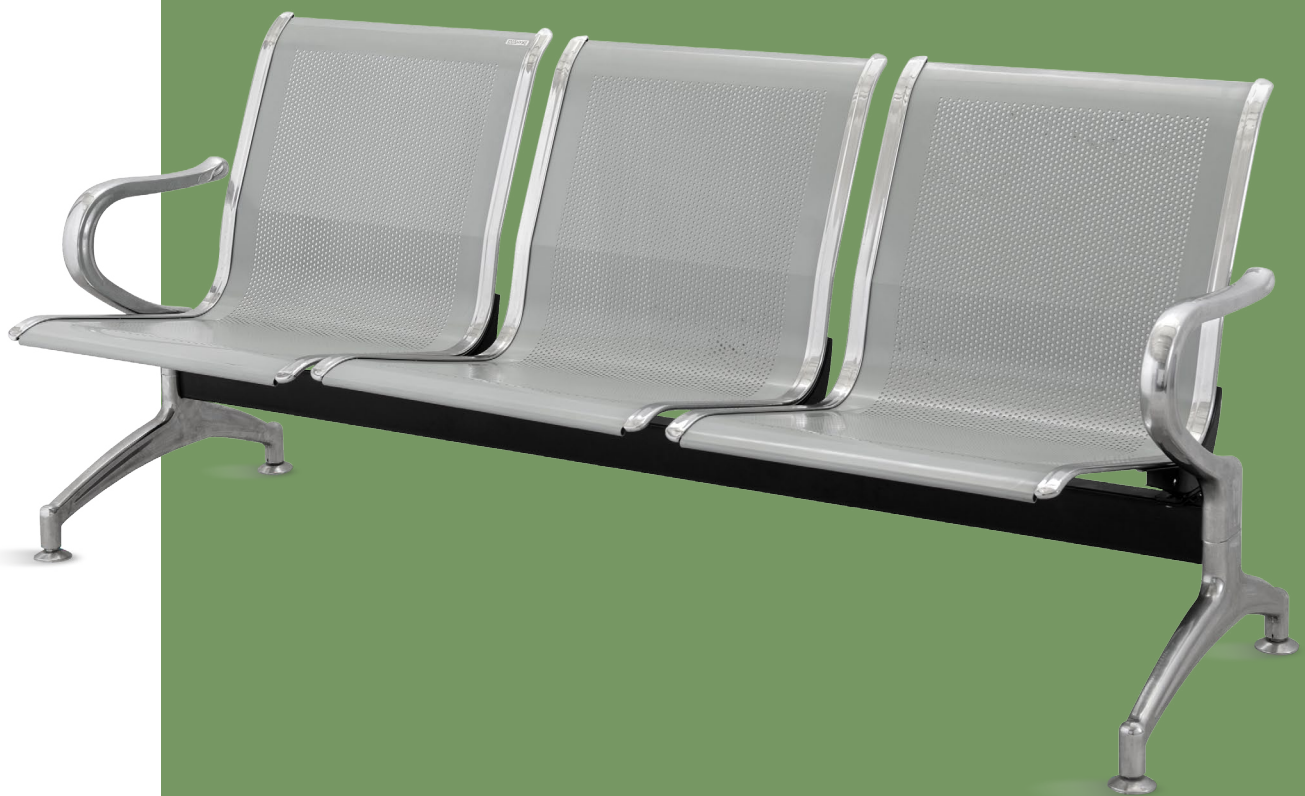


# NWE008

## TREAT-WAITING CHAIR

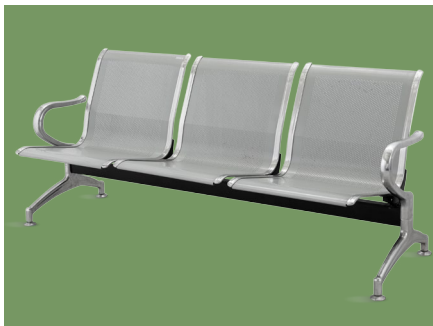
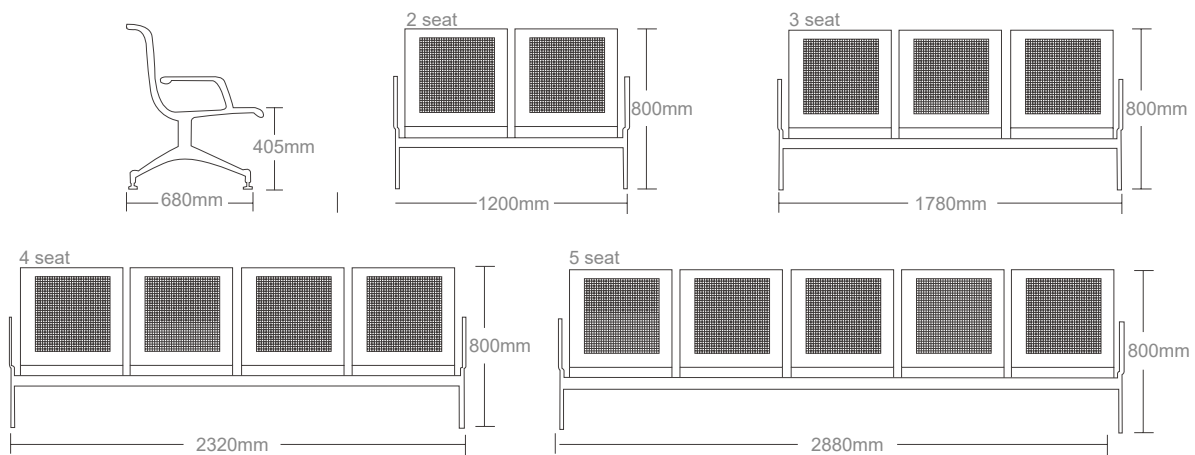


# NWE008

## FEATURES AND HIGHLIGHTS

### Technical parameters

- Size (LxWxH) 1780×740×800 mm



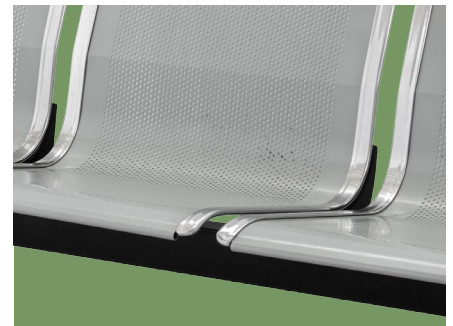
#### Material

The seat plate is stainless steel, and the handrails and side bars are chrome-plated.



#### Armrest

Made of high quality tensile steel plate, with electroplated chromium after derusting processing.



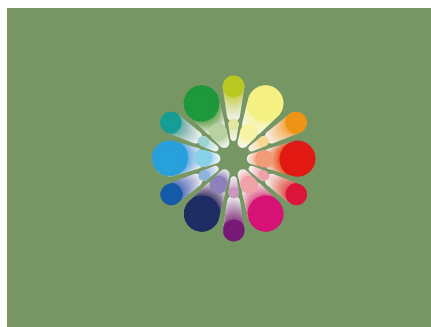
#### Beam

Made of high quality square tube, with painting.



#### Backrest

Backrest with tilt, feel comfortable.



#### Color

Silver, color can be customized.



#### Optional

Optional PU seat, make people feel more comfortable.



As the circumstance of printing, the photos might have minor difference on color, tactile from real products.  
As the update of design and improvement, parameters and outlook of products might change, thanks for understanding.

# NUMBER WIN

MEDICAL TECHNOLOGY



## 7×24

Online 24 Hours for Sales Service  
Timely Response for Clients' Problems

+86 18021239272

Suzhou Number Win Medical Technology Co.,Ltd.

No. 35, Lehong Road · Zhangjiagang (Jiangsu) · China

export@number-win.com

www.number-win.com



Company video



General catalogue