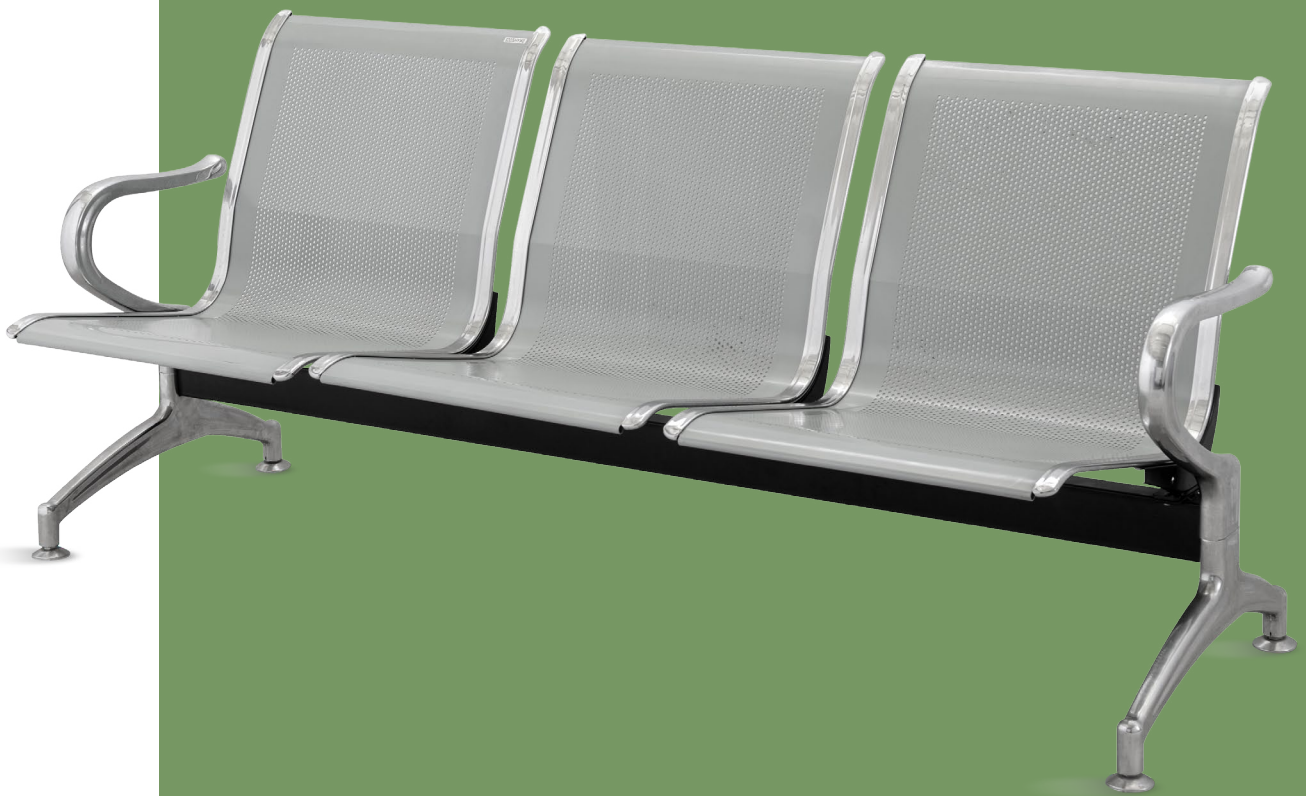


NWE008

TREAT-WAITING CHAIR

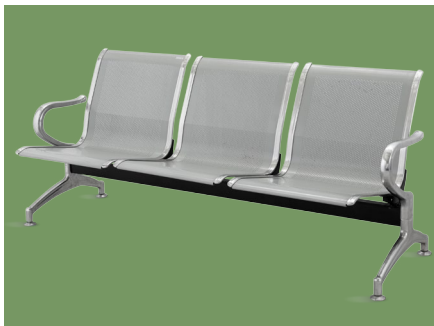
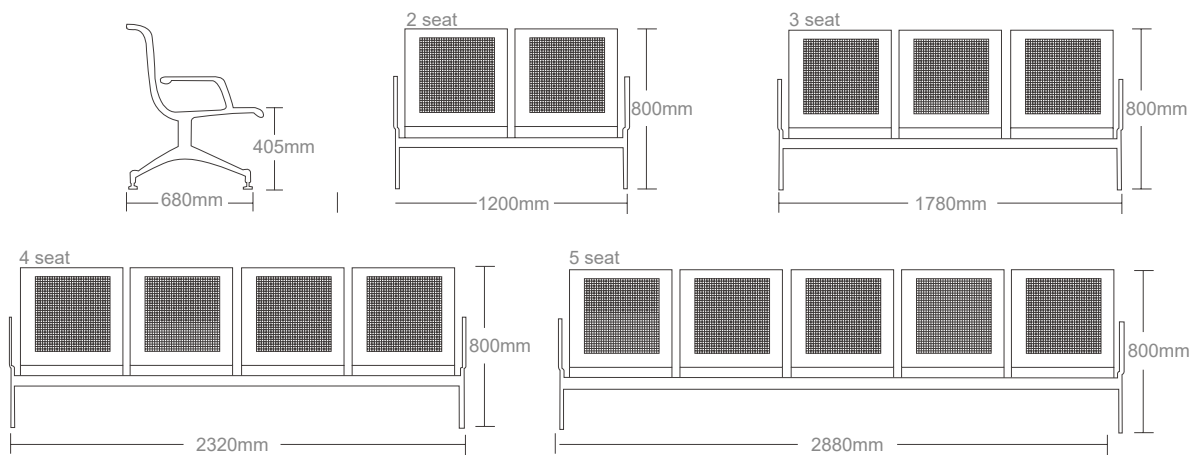


NWE008

FEATURES AND HIGHLIGHTS

Technical parameters

- Size (LxWxH) 1780×740×800 mm



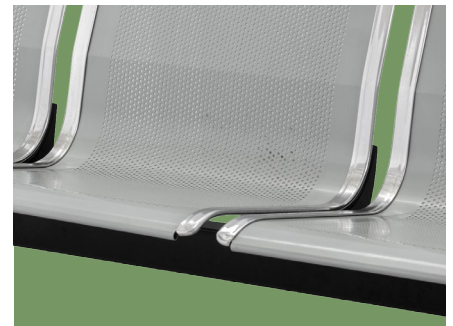
Material

The seat plate is stainless steel, and the handrails and side bars are chrome-plated.



Armrest

Made of high quality tensile steel plate, with electroplated chromium after derusting processing.



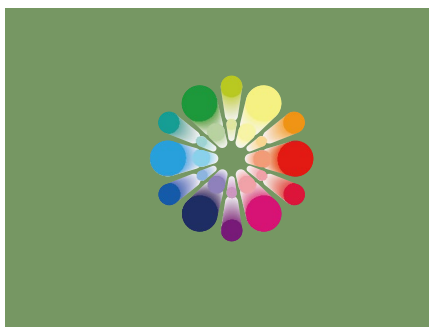
Beam

Made of high quality square tube, with painting.



Backrest

Backrest with tilt, feel comfortable.



Color

Silver, color can be customized.



Optional

Optional PU seat, make people feel more comfortable.



NUMBER WIN

MEDICAL TECHNOLOGY



7x24

Online 24 Hours for Sales Service
Timely Response for Clients' Problems

+86 18021231901

Suzhou Number Win Medical Technology Co.,Ltd.

No. 35, Lehong Road · Zhangjiagang (Jiangsu) · China

export@number-win.com

www.number-win.com

As the circumstance of printing, the photos might have minor difference on color, tactile from real products.
As the update of design and improvement, parameters and outlook of products might change, thanks for understanding.



Company video



General catalogue