

NWE002

STEP STOOL



NWE002

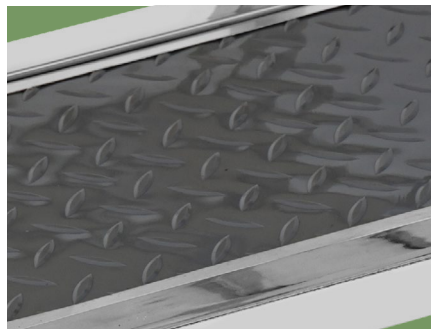
FEATURES AND HIGHLIGHTS

Technical parameters

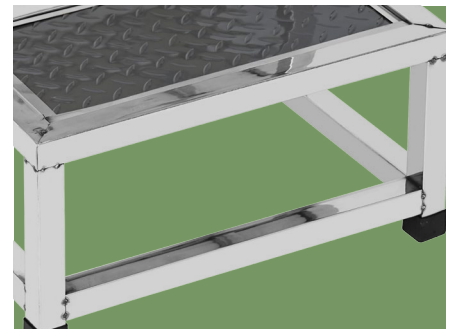
- External size (LxWxH) 450x440x200/400mm (± 10 mm)



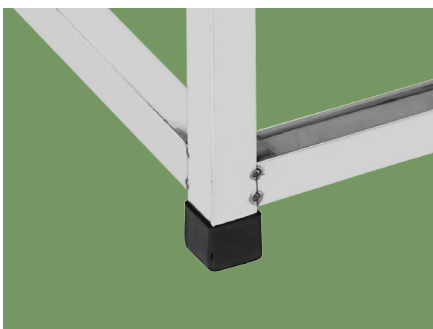
Material
Stainless steel tube.



Stool surface
With anti-slip pad.



Reinforced bottom
The bottom is reinforced with horizontal bars, sturdy and durable.



Silicone feet pads
Equipped with silicone feet, non-slip and solid.



Size
Size: L450*W400*H200/400mm ± 10 mm



NUMBER WIN

MEDICAL TECHNOLOGY

As the circumstance of printing, the photos might have minor difference on color, tactile from real products.
As the update of design and improvement, parameters and outlook of products might change, thanks for understanding.



7x24

Online 24 Hours for Sales Service
Timely Response for Clients' Problems

+86 18021231901

Suzhou Number Win Medical Technology Co.,Ltd.

No. 35, Lehong Road · Zhangjiagang (Jiangsu) · China

export@number-win.com

www.number-win.com



Company video



General catalogue