

NWE002-1

STEP STOOL



NWE002-1

FEATURES AND HIGHLIGHTS

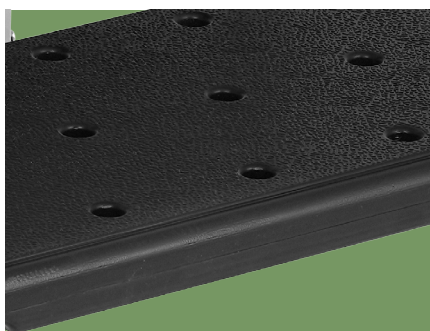
Technical parameters

- Size for overall product (LxWxH) 410x500x185/320mm (±10mm)
- Size for stool surface (LxWxH) 410x220mm (±10mm)



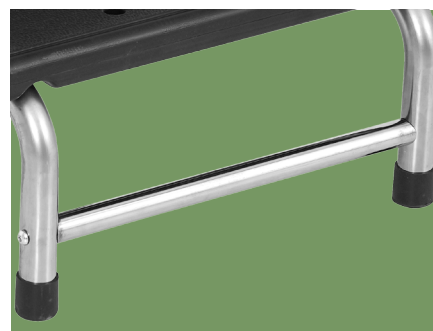
Material

PP platform, stainless steel tube, not easy to deform.



Stool surface

The stool surface is made of PP material with concave and convex particle design, which is effectively non-slip.



Reinforced bottom

The bottom is reinforced with horizontal bars, sturdy and durable.



Silicone foot pads

Equipped with silicone feet pads, non-slip and solid, not damage the ground



Size

Size for overall product: 410*500*185/320mm
Size for stool surface: 410*220mm



NUMBER WIN

MEDICAL TECHNOLOGY



7×24

Online 24 Hours for Sales Service
Timely Response for Clients' Problems

+86 18021239272

Suzhou Number Win Medical Technology Co.,Ltd.

No. 35, Lehong Road · Zhangjiagang (Jiangsu) · China

export@number-win.com

www.number-win.com

As the circumstance of printing, the photos might have minor difference on color, tactile from real products.
As the update of design and improvement, parameters and outlook of products might change, thanks for understanding.



Company video



General catalogue