

NWE-135

ELECTRIC DIALYSIS CHAIR



NWE-135

FEATURES AND HIGHLIGHTS



Technical parameters

▪ Size	1900×580mm
▪ Back	800×580mm
▪ Seat	530×580mm
▪ Leg	490×580mm
▪ Foot board	(230-360)×220mm
▪ Seat height	550mm
▪ Pillow	370×290mm
▪ Armrest	500×160mm
▪ Mattress thickness	60mm
▪ Backplane folding Angle	0°- 70°
▪ Leg plate folding	0° -60°
▪ Hand plate size	480×160mm
▪ Voltage and frequency:	100-240 V · 50/60 Hz
▪ Plug as required (hospital grade)	

Technical configuration

<input checked="" type="checkbox"/> With CPR	
<input checked="" type="checkbox"/> Hand controller	1pc
<input checked="" type="checkbox"/> Power cord	1pc
<input checked="" type="checkbox"/> 3" silent caster	1set
<input checked="" type="checkbox"/> Small dining table	1pc



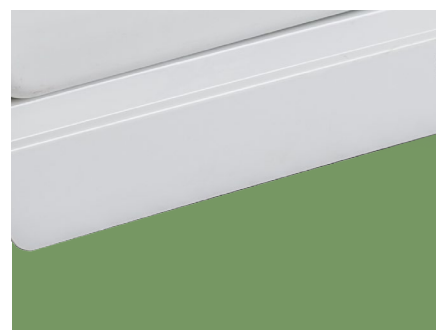
Steels

Baosteel from Fortune Global 500.



Plastic

11 Process epoxy painting, ASTM testing anti-bacterial, paint thickness 0.12mm, brightness 60°, paint can resist 50kg impact.



Welding

Panasonic Robotic ensure 360° full smooth welding.



Electric Motor

Linear motor, with UL/ROHS/EN standard.
Noise under 50 dB, with lifetime 20,000 times movement.



Chair Cover

Optional genuine leather or supebric cover, with artisanal making, comfortable hand feeling.



Pillow

Ergonomics design removable pillow.



Handrail

Upgraded armrest, can be right-left, front-back adjustable. Donor can control universal position. Armrest is R120° concave curve, avoid donor's arm sliding, ensure the donor's safety and comfortable.



NUMBER WIN

MEDICAL TECHNOLOGY

As the circumstance of printing, the photos might have minor difference on color, tactile from real products.
As the update of design and improvement, parameters and outlook of products might change, thanks for understanding.



7×24

Online 24 Hours for Sales Service
Timely Response for Clients' Problems

+86 18021239272

Suzhou Number Win Medical Technology Co.,Ltd.

No. 35, Lehong Road · Zhangjiagang (Jiangsu) · China

export@number-win.com

www.number-win.com



Company video



General catalogue