

NWE-133

ELECTRIC DIALYSIS CHAIR



NWE-133

FEATURES AND HIGHLIGHTS



Technical parameters

▪ Size	1800×580mm
▪ Back	770×580mm
▪ Seat	470×580mm
▪ Leg	380×540mm
▪ Foot board	410×200mm
▪ Seat height	550-750mm
▪ Armrest	500×160mm
▪ Mattress thickness	60mm
▪ Back rest lifting	-8°- 70°
▪ Leg rest lifting	20° -75°
▪ Armrest swing out	0°-270°
▪ Voltage and frequency:	100-240 V · 50/60 Hz
▪ Plug as required (hospital grade)	

Technical configuration

<input checked="" type="checkbox"/> With CPR	
<input checked="" type="checkbox"/> Hand controller	1pc
<input checked="" type="checkbox"/> Power cord	1pc
<input checked="" type="checkbox"/> 3" silent caster	1set
<input checked="" type="checkbox"/> Small dining table	1pc



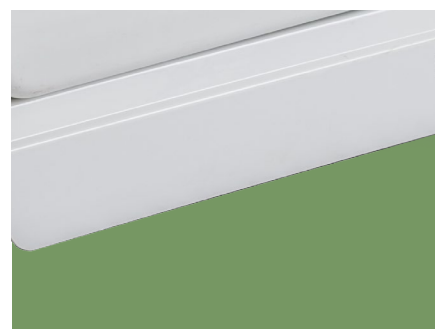
Steels

Baosteel from Fortune Global 500.



Plastic

11 Process epoxy painting, ASTM testing anti-bacterial, paint thickness 0.12mm, brightness 60°, paint can resist 50kg impact.



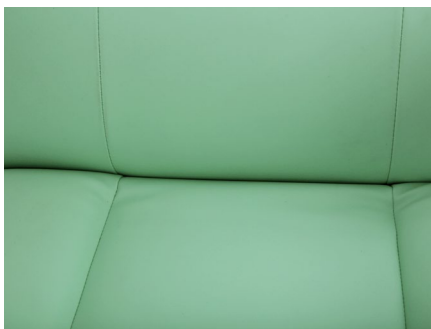
Welding

Panasonic Robotic ensure 360° full smooth wedding.



Electric Motor

Linear motor, with UL/ROHS/EN standard.
Noise under 50 dB, with lifetime 20,000 times movement.



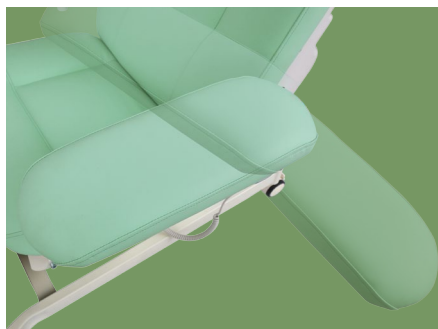
Chair Cover

Optional genuine leather or supebric cover, with artisanal making, comfortable hand feeling.



Foot Board

Foot pedal connects with leg rest, adjustable, can automatic extension the chair lengthh 250mm, realize both foot step and leg support functions.



Handrail

Upgraded armrest, can be right-left, front-back adjustable. Donor can control universal position. Armrest is R120° concave curve, avoid donor's arm sliding, ensure the donor's safety and comfortable.



Table Board

Adjustable ABS tray table, with antiskid convex edge, tank for cup and cellphone. USB/5V optional. Very convenient for donor.



NUMBER WIN

MEDICAL TECHNOLOGY

As the circumstance of printing, the photos might have minor difference on color, tactile from real products.
As the update of design and improvement, parameters and outlook of products might change, thanks for understanding.



7×24

Online 24 Hours for Sales Service
Timely Response for Clients' Problems

+86 18021239272

Suzhou Number Win Medical Technology Co.,Ltd.

No. 35, Lehong Road · Zhangjiagang (Jiangsu) · China

export@number-win.com

www.number-win.com



Company video



General catalogue